



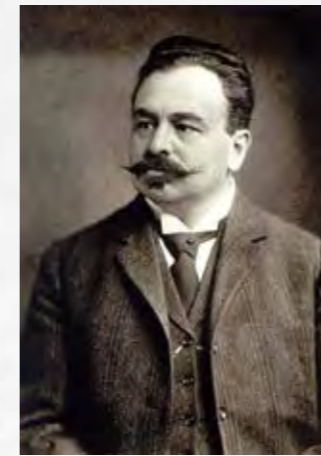
OUR COLLECTIVE

CEMINTEL®

An idea born from imagination

The father of fibre cement, Ludwig Hatschek, started to imagine a new building material in 1894. He wanted a material that was lighter than brick, cheaper than slate and better than sheet metal.

In 1900, he achieved his breakthrough with a special mix of fibres, cement, pulp, air and water. The Austrian calls the world's first industrially manufactured building material 'Eternit' and numerous European countries adopted the technology from 1903. Australia first introduced the technology in about 1917.



Ludwig Hatschek





BARESTONE
PIMPALA, SA

Unparalleled design flexibility

Fibre cement is perhaps one of the most flexible design building materials available today.

It can be manufactured in numerous panel sizes and thicknesses.

It can be cut into various shapes and patterns.

It can be compressed for high strength applications.

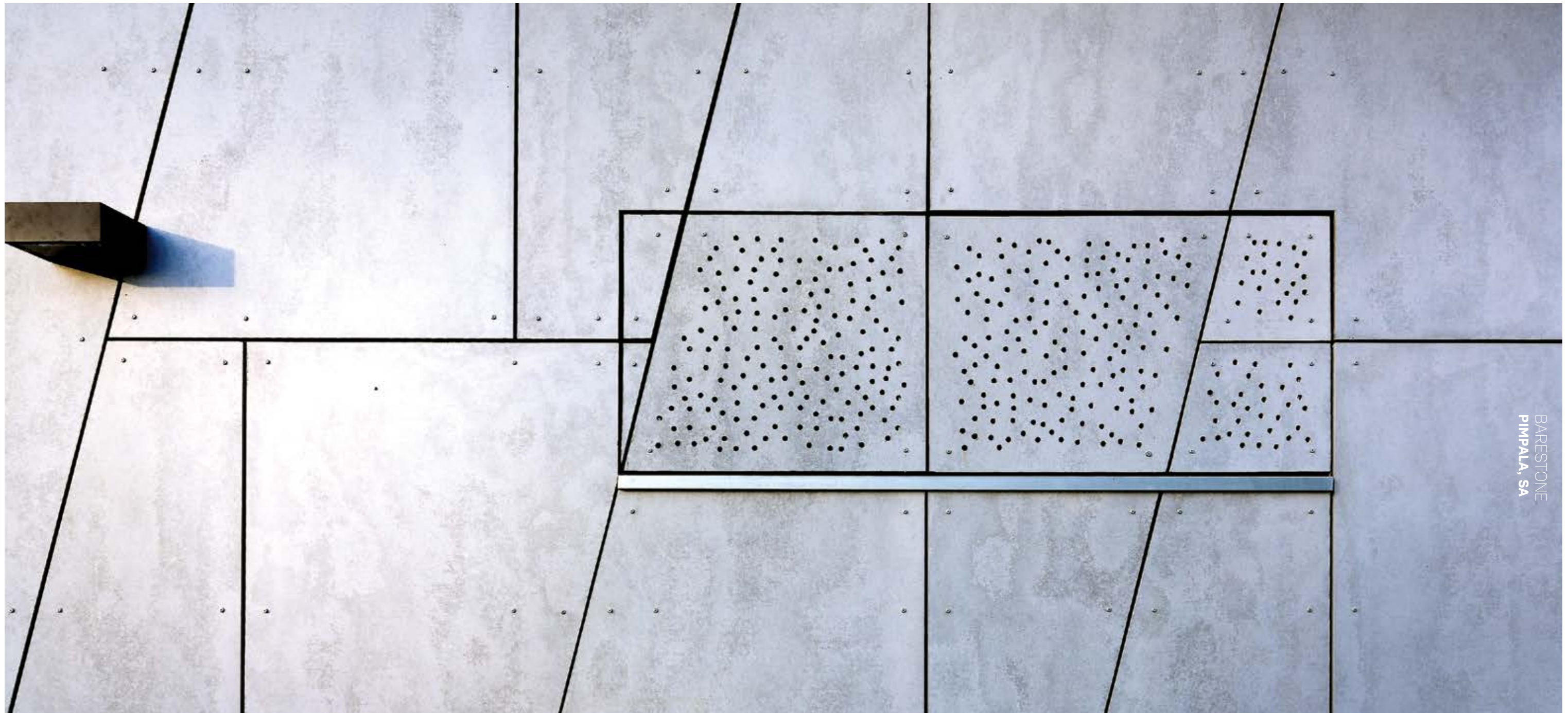
It can be used in acoustic systems.

It can be used as a superior wet area lining product.

It can be painted.

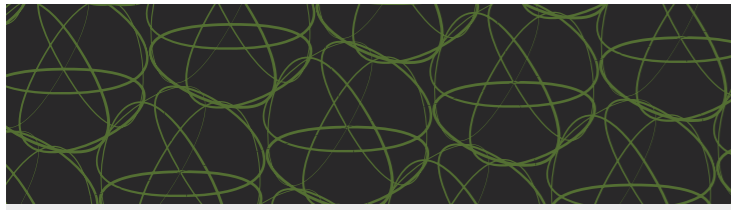
It can be tiled.

It can be used where non-combustible materials are required under the NCC 2022 Volume One, Clause C2D10 [NCC 2019: C1.9]



Our Collective is a showcase of not only our products, but the vision and contribution of architects and designers, builders, engineers, our staff, customers and numerous other people involved in the construction process.

Thank you for your contribution and for choosing our products. We are delighted to share this inspiration from you all and are thrilled to see how you are using our products to create beautiful buildings all over the country.



Surround™

A European manufactured, prefinished range that is expertly put together so that you can mix and match colours with confidence. Surround is a core range of neutrals and discrete patterns for buildings to look at one with their environment, taking references from the landscape and streetscape.

The colour-bodied (also known as colour through) panels come **trimmed and sealed** and can be installed in a horizontal or vertical orientation using the Cemintel Commercial ExpressWall® TopHat fixing system.

Colour matched rivets accommodate the differential movement between the building structure and the façade. They also provide a more seamless aesthetic to your project.

Only one rivet type is used to install the panels removing potential for costly errors.

Note: All Metal and Marl products are non-stocked items. Minimum order quantities and a 16 week (minimum) lead time apply.*

Minimal stock held of all Secondary Palette products. Check availability with Cemintel®.

As Surround is a prefinished, manufactured product, images may vary from the actual product in regard to colour and surface finish. Panels should be inspected by the builder/installer prior to installation to ensure they meet aesthetic requirements.

Surround Colour Palette

	Base	String	Leather	Metal*	Marl*
Whiteish					
Greyish					
Blackish					
Greenish					
Blueish					

Secondary Palette

Mainland		
Volta		Mete
Maya		Garb
Truss Grey		Gauze
Hover		Strike
Quinta		Woodlot



Territory™

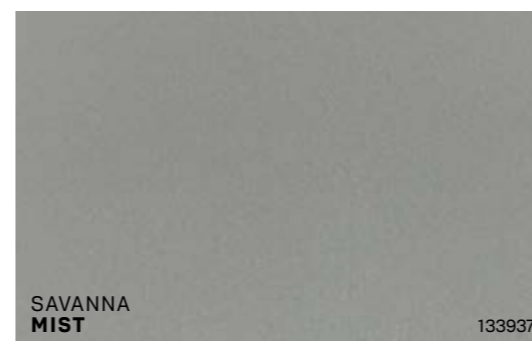
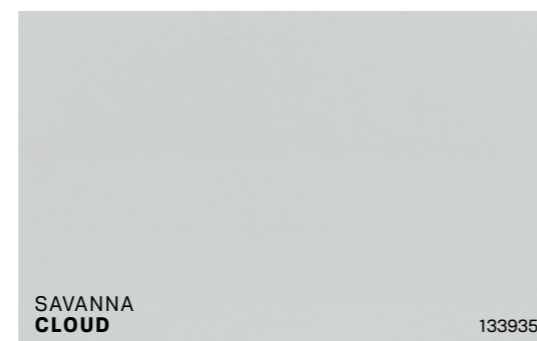
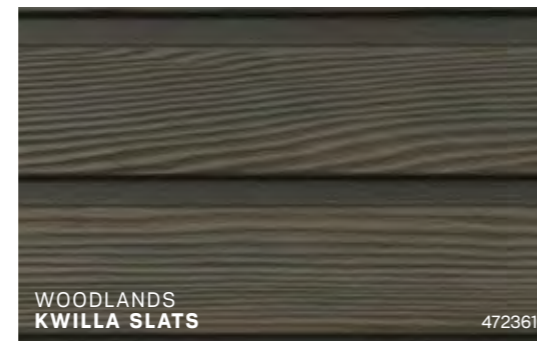
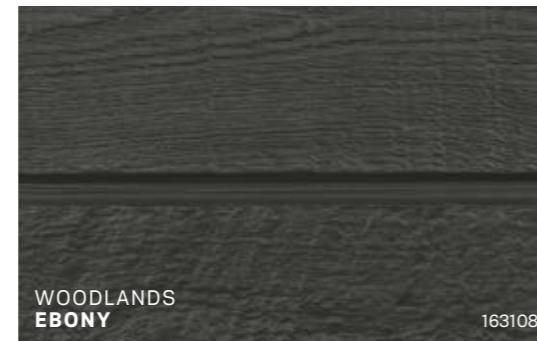
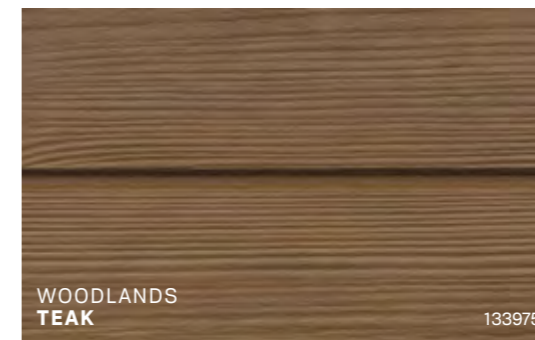
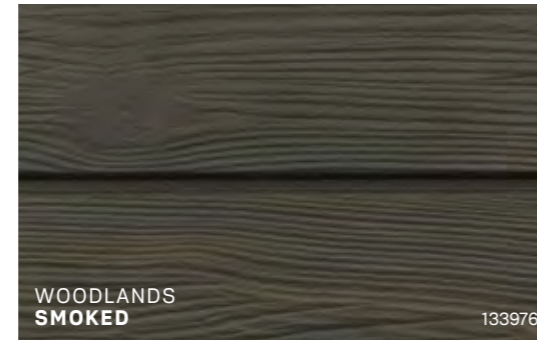
Cemintel Territory is a prefinished cladding system that simulates materials such as stone, timber, concrete, metal, and smooth render.

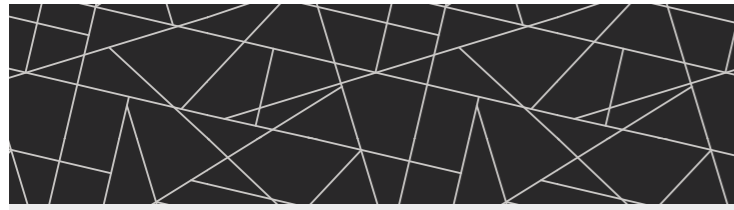
Territory cladding is a 16mm thick cement bonded fibrous wood particle panel that is pressed with surface textures and finished with a high quality paint and UV coating. Panels are 3030mm in length, with an effective cover width of 455mm, and connect seamlessly into each other via a tongue and groove profile.

Territory cladding panels are supported by a proprietary concealed fixing system that enables the panels to be installed on masonry, timber and steel frames, either horizontally or vertically, externally or internally, on both residential and commercial buildings.

As Territory is a prefinished, manufactured product, images may vary from the actual product in regard to colour and surface finish. Panels should be inspected by the builder/installer prior to installation to ensure they meet aesthetic requirements.

Territory Colour Palette





Barestone™

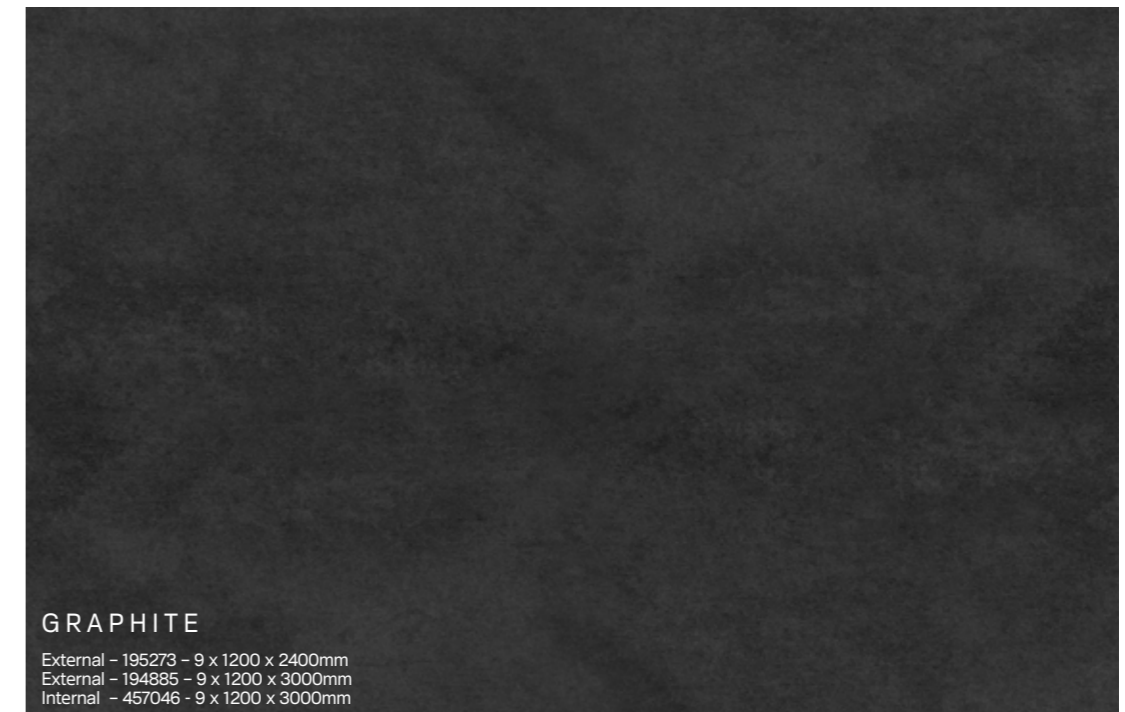
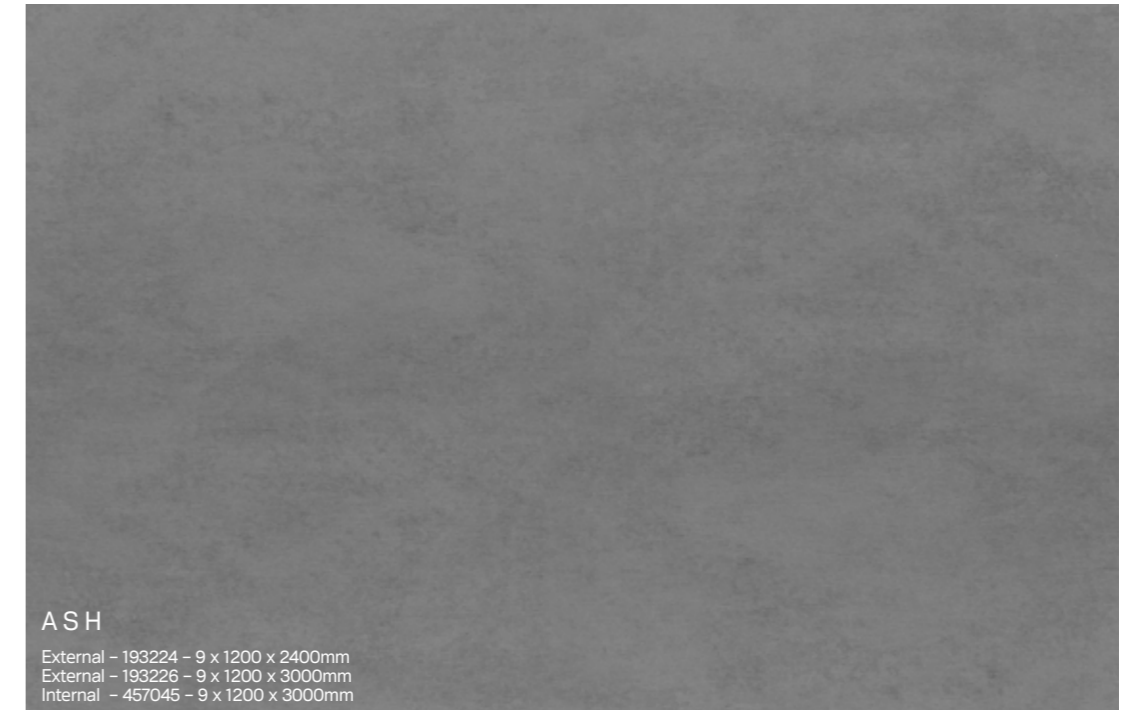
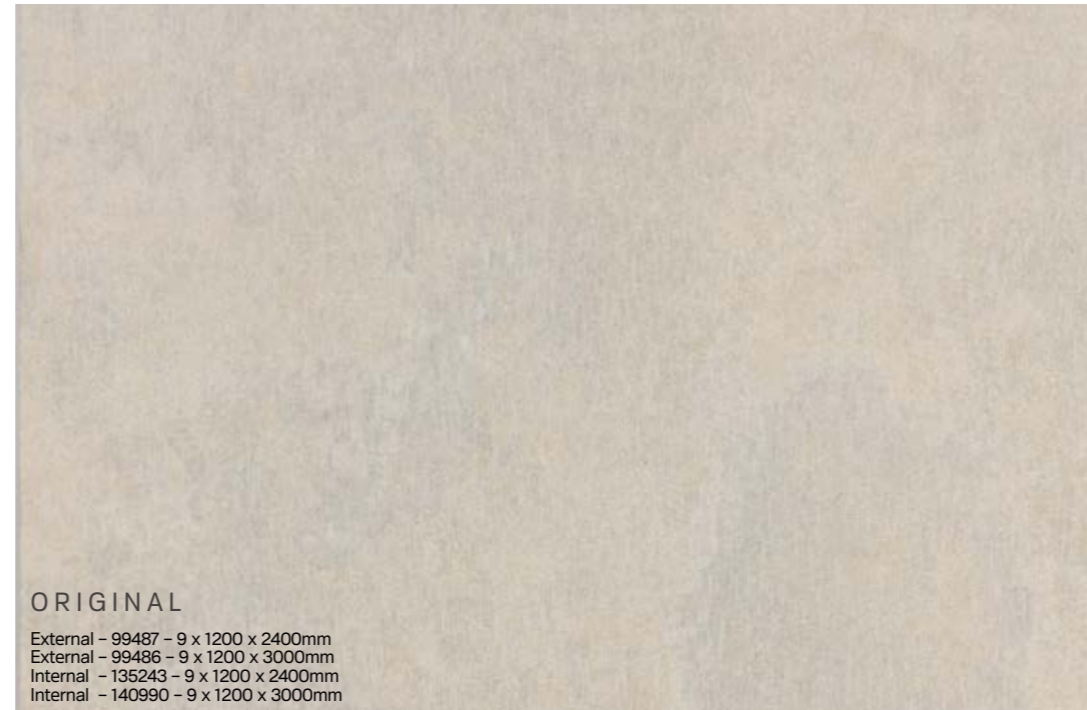
Cemintel Barestone prefinished cladding provides a natural, raw concrete appearance that blends seamlessly into its environment and adapts easily to modern, contemporary design. Barestone is suitable for external and internal applications on both residential and commercial projects, and can be cut into different geometric shapes to create striking effects.

Barestone panels can be installed on steel or timber stud framing, or masonry/concrete, either horizontally or vertically, externally or internally. External panels are secured with either screws or colour matched rivets when fixing to steel framing, and colour matched screws when fixing to timber framing. For internal applications, Barestone panels are supported by a concealed fixing system.

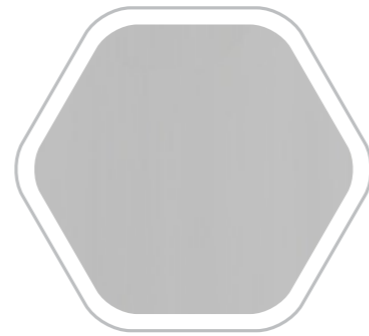
Barestone is an Australian made, prefinished, compressed fibre cement cladding. Consisting primarily of Portland Cement, cellulose fibre, air and water, Barestone is compressed to produce a dense 9mm thick panel that offers superior strength and durability. Panels are square edged and come trimmed and sealed in a standard 1200 x 3000 x 9mm size. Barestone external panels incorporate Cemintel's unique water block and UV protective coating and are factory sealed on all sides, for added weather resistance and durability. The internal panels have an effective stain resistant coating applied to the panel face.

As Barestone is a prefinished, manufactured product, images may vary from the actual product in regard to colour and surface finish. Panels should be inspected by the builder/installer prior to installation to ensure they meet aesthetic requirements.

Barestone Colour Palette



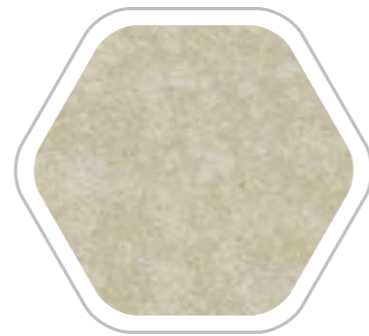
Commercial Expresspanel®



In conjunction with the Commercial ExpressWall system, it combines a modern, express jointed aesthetic with a fast and economical top hat installation system. With pre-primed, multiple sized sheets available, panels can be arranged in a variety of patterns.

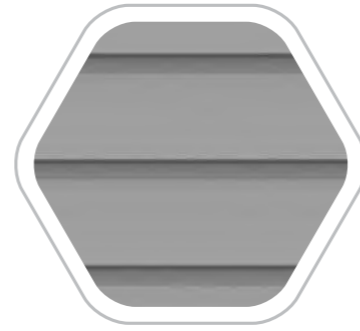
With great impact resistance and strength, these 9mm compressed panels can be used in applications required to withstand high wind loadings, including cyclonic conditions.

Ceminseal® Wallboard



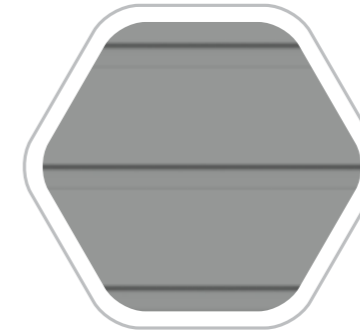
CeminSeal Wallboard uses Cemintel's unique CeminSeal water block technology, repelling water, increasing paint adhesion and aiding moisture management in the places that can't be seen. It is applied to the face of the panel and has been tested to show higher water resistance when compared to wet area plasterboard and other products on the market. The smooth finish of CeminSeal Wallboard means less work for fixing and setting and provides a smooth paint surface when not tiled over.

Weatherboards



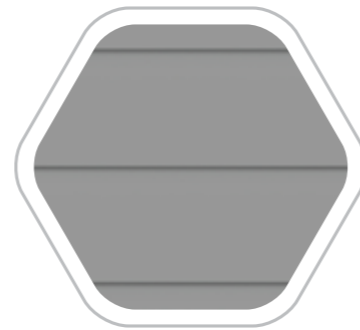
Balmoral Weatherboards

With strong, deep shadow lines, these pre-primed weatherboards enhance both traditional and contemporary residential design, allowing you to create the perfect home. A 16mm thick, tongue and groove profile provides sharp lines with a distinct shadow. Balmoral is available in 150mm and 180mm widths*.



Headland® Weatherboards

A more traditional weatherboard, Headland has a sharp edged, linear recess. It provides a classic Australian feel that allows a variety of standalone or composite designs. This weatherboard is fixed in a ship-lapped manner with a 25mm overlap, which conceals fixings and is simple to install. The weatherboards are primed and ready for painting.



Scarborough® Weatherboards

A modern take on traditional weatherboard, Scarborough is a stylish product with strong shadow lines that will enhance both traditional and contemporary residential designs. Scarborough has a concealed fixing system and a square profile so the boards butt together and provide a flat surface finish. The panels are pre-primed and gun nailable.

Modern Cladding



Aspect Cladding®

Cemintel Aspect Cladding displays a distinctive horizontal overlapping joint, while providing a classic, attractive façade in a wider panel than traditional weatherboards.



Edge Cladding®

Edge Cladding is a pre-primed, external cladding with sharp grooves, allowing for a creative pairing with the whole Cemintel range. Edge Cladding can be installed either vertically or horizontally.



Mosaic®

Mosaic has a modern, geometric express joint aesthetic, making it the ideal façade for the modern home. Multiple sized panels can be arranged to form a pattern effect, either using block colour or a variety of tones using a painted finish.



SimpleLine®

SimpleLine has strong, clean edges that provide for an express panel look without the cost. These panels have ship-lapped vertical edges and there are multiple installation methods to give you choice and flexibility.

Flooring & Decking



Ceramic Tile Underlay

Cemintel's Ceramic Tile Underlay is for internal use and is an easily installed and cost effective way to form a flat substrate for laying ceramic tiles over existing floors. It provides a thinner solution that minimises impact on floor levels with surrounding areas. It is an effective option to use over tongue and groove hardwood floors when tiling over them.



Compressed Sheet

Cemintel Compressed Sheets are tried and tested for proven long term strength. Designed for use in tough conditions, including wet area flooring and decking, the panels can be covered in tiles and other floor coverings.



Constructafloor®

Cemintel Constructafloor is a nailable, advanced lightweight, fibre cement structural flooring product available in two options: internal or external. Panels have a tongue and groove joint, which keeps stability between joists and reduces the risk of membrane cracking. As the product is nailable, installation is faster as no countersinking is required. They do not contain any magnesium chloride (salt).

Traditional Cladding & Plank



Cladding Sheet

Cemintel Cladding Sheet provides a lightweight panel solution in a most simple and traditional form. Panels are manufactured in Australia utilising a full steels process and are clean and smooth, providing a better painted finish.

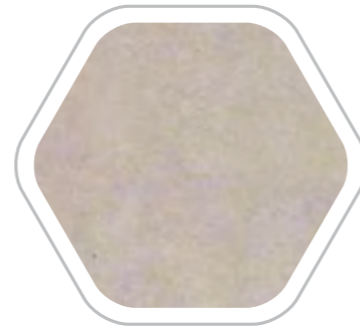
The panels are very easy to install with traditional nail-on-frame methods, as well as an option for a drained cavity cladding solution. Available in a range of sizes that make it versatile in application with minimal waste.



Smooth Plank

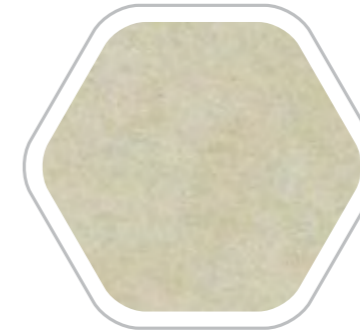
Cemintel Smooth Plank provides a flexible, external cladding option ideally used as a complete external cladding system, or for second storey additions. Planks are available in two widths and can be painted, or stained, to create the desired finish.

Eaves & Soffits



SoffitLine®

Cemintel Soffitline is a durable product that can be used for external soffit and ceiling applications where a flush joint appearance is required. The panels incorporate Cemintel's unique CeminSeal® water block technology, repelling water and increasing paint adhesion.

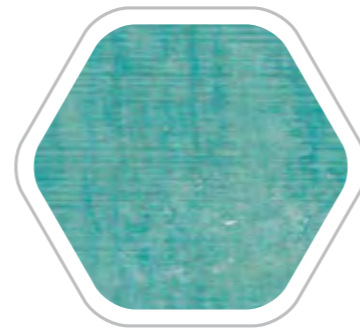


Eaves Lining Sheet

Specifically designed for use in the lining of residential eaves, Cemintel Eaves Lining sheets are manufactured in Australia and are sized to suit standard eaves' widths.

The joints are covered with H moulds or cover moulds. The sheets should be coated with an exterior paint system for a durable, low maintenance lining.

Texture Base



Texture Base Sheet

Commonly referred to as 'Blueboard', Texture Base Sheet provides a substrate for a smooth, monolithic surface when utilising textured finishes.

The products are generally used as a lightweight solution for second storey residential wraps on the ground with rendered masonry.

cemintel.com.au
1300 236 468

For Design and Technical Support:
DesignLINK - 1800 621 117 | designlink@csr.com.au

The products referred to in this document have been manufactured by or on behalf of CSR Building Products Limited ("CSR") to comply with the National Construction Code (NCC) and any relevant Australian Standards. While any design or usage guidelines set out in this document have been prepared in good faith by CSR, they are of a general nature only and are intended to be used in conjunction with project specific design and engineering advice. It is the responsibility of the customer to ensure that CSR's products are suitable for their chosen application, including in respect of project-specific matters such as, but not limited structural adequacy, acoustic, fire resistance/combustibility, thermal, and weatherproofing requirements. All information relating to design/installation/application of these products is offered without warranty and no responsibility can be accepted by CSR for errors and omissions, or for any use of the relevant products not in accordance with CSR's technical literature or any other relevant industry standards. For current technical and warranty documentation relating to Cemintel's products, visit Cemintel's website at cemintel.com.au.



COMMERCIAL

SURROUND // WHITEISH BASE
BERWICK, VIC





Architect: Silver Thomas Hanley. Photography: tradiemarketing.com



SURROUND // WHITEISH BASE

TERRITORY // WOODLANDS // TEAK
ASCOT VALE, VIC





Architect: k20 Architecture. Photography: tradiemarketing.com



timber look
without the maintenance
WOODLANDS // TEAK

BARESTONE
ROZELLE, NSW





Architect: John Ferres – Scott Carver Architects. Builder: Richard Crookes Construction.



Gritty & raw
to contrast timber naturally
BARESTONE

SURROUND // GREYISH WHITEISH BLACKISH
GORDONVALE, QLD

GORDONVALE STATE HIGH SCHOOL
Personal Excellence Successful Futures



CUSTOM CLADDING PANEL
GOLD COAST, QLD



Patchwork
patterning

Architects: Archipelago // Arkhefield // ARM // Lat27. Developer: Grocon.

SURROUND // BLACKISH BASE
ROSANNA, VIC

Platform 1





Photography: tradiemarketing.com

A new favourite for soffits and ceilings – no painting needed.

SURROUND // BLACKISH BASE



SURROUND // SECONDARY PALETTE
ALBION, VIC

2 / 2

3 / 2





A splash of
colour
WITH NO PAINTING
REQUIRED



SURROUND // SECONDARY PALETTE

Photography: tradiemarketing.com

SURROUND WHITEISH BASE
BLACKTOWN, NSW





Architect: Bow Goold.



Break the rules
SURROUND // WHITEISH BASE

TERRITORY // RIVERBED // SAND
DONVALE, VIC



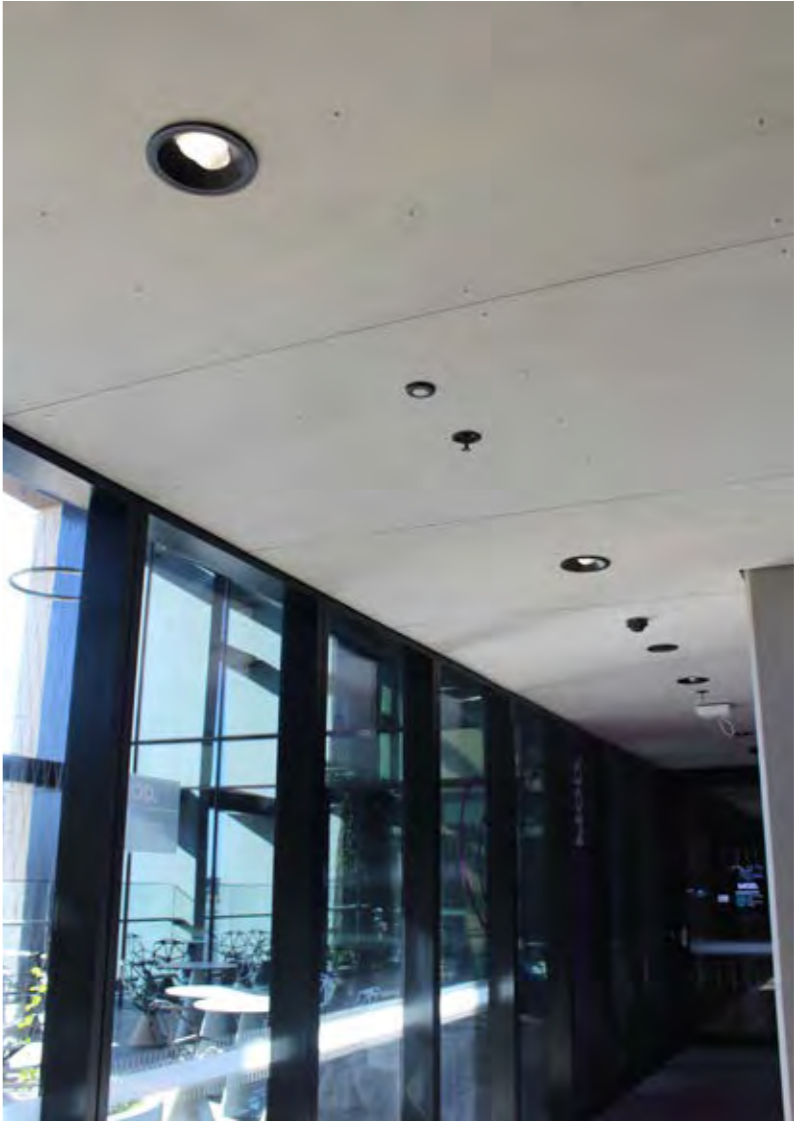


Photography: tradiemarketing.com

RIVERBED // SAND



BARESTONE
ADELAIDE, SA



COMMERCIAL EXPRESSWALL + BARESTONE
HORNSBY, NSW





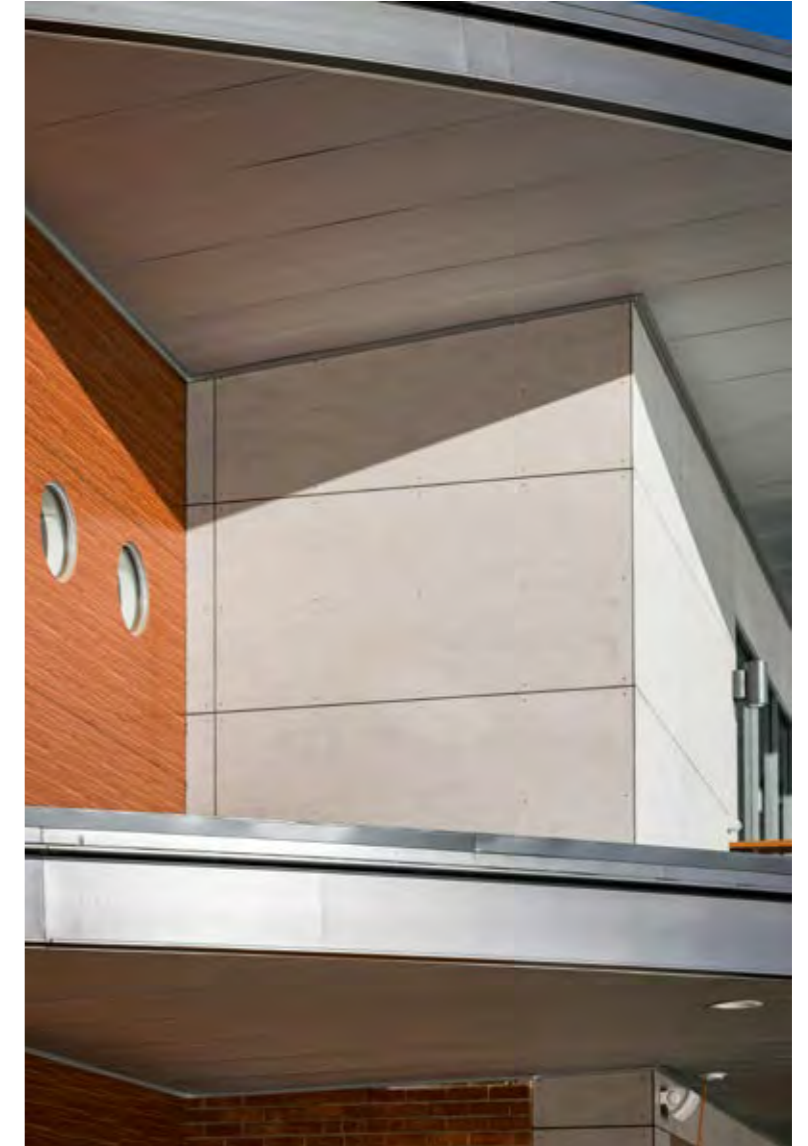
Architect: FDG. Photographer: Angie Burgess.

Active
COMMUNITY SPACES
BARESTONE +
COMMERCIAL EXPRESSWALL





BARESTONE
MILDURA, VIC



Architect: Nairn Architecture.



Natural & earthy
BARESTONE

BARESTONE
NORTH RYDE, NSW





Architect: Bates Smart. Photography: Antoine Veling. Builder: Watpac Constructions Pty Ltd.



Urban
LIVING
BARESTONE

SURROUND // WHITEISH BASE + BLACKISH BASE + BARESTONE
SOUTH YARRA, VIC





Architect: Julian Brenchley Architects. Photography: Peter Hyatt.

THE octoblock

SURROUND

It's unique in its own way in that it's prefinished, you don't have to go near it. There is no painting required at all. And it's going to last!

Julian Brenchley
Architect - The Block

**SURROUND // WHITEISH BASE +
BLACKISH BASE + BARESTONE**

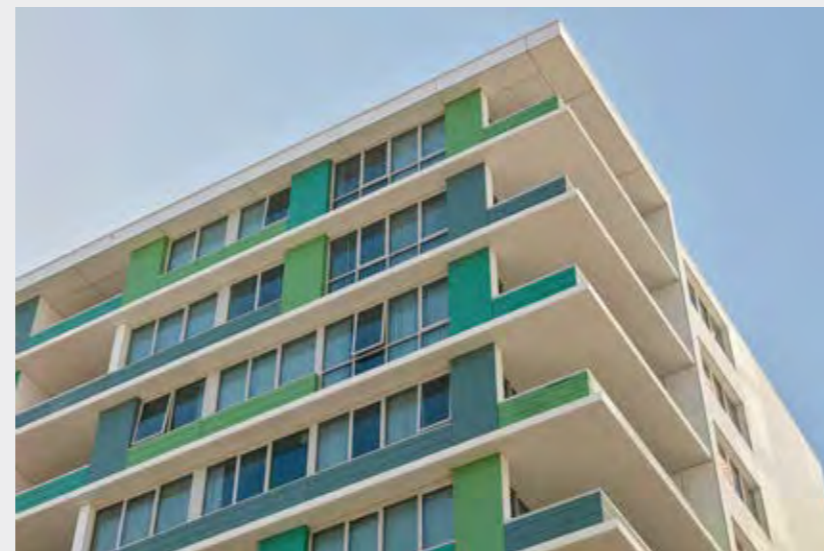
COMMERCIAL EXPRESSWALL
WOLLI CREEK, NSW





Apartment **LIVING**

Commercial Expresswall
– a tried, tested and trusted
cladding system.



TERRITORY // QUARRY // CONCRETE
SOUTH MELBOURNE, VIC





Photography: tradiemarketing.com

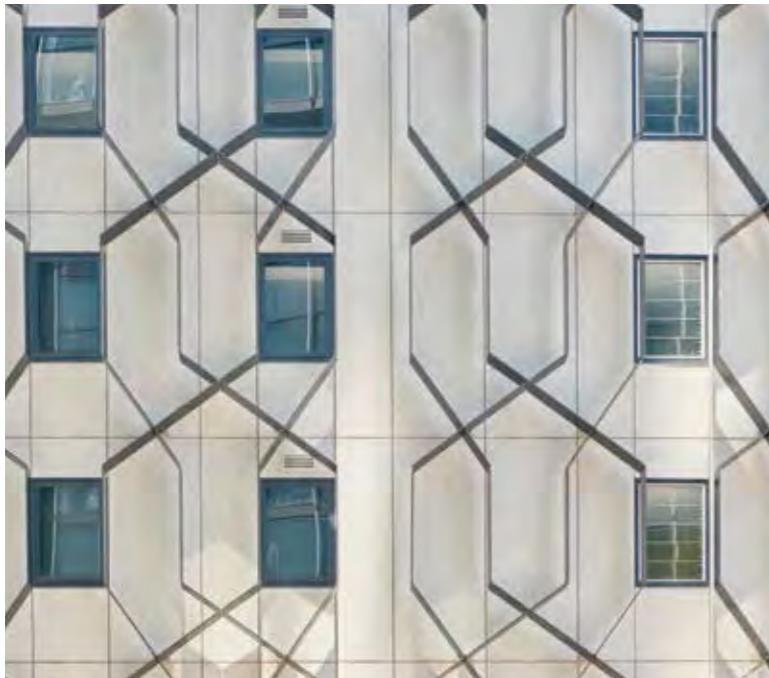


Vertical
SCALE
QUARRY // CONCRETE



BARESTONE
CHIPPENDALE, NSW





A vibrant inner city community of Sydney just got more beautiful.

BARESTONE An Australian original



Architects: Tonkin Zulaikha Greer and Paul Davies Architect.

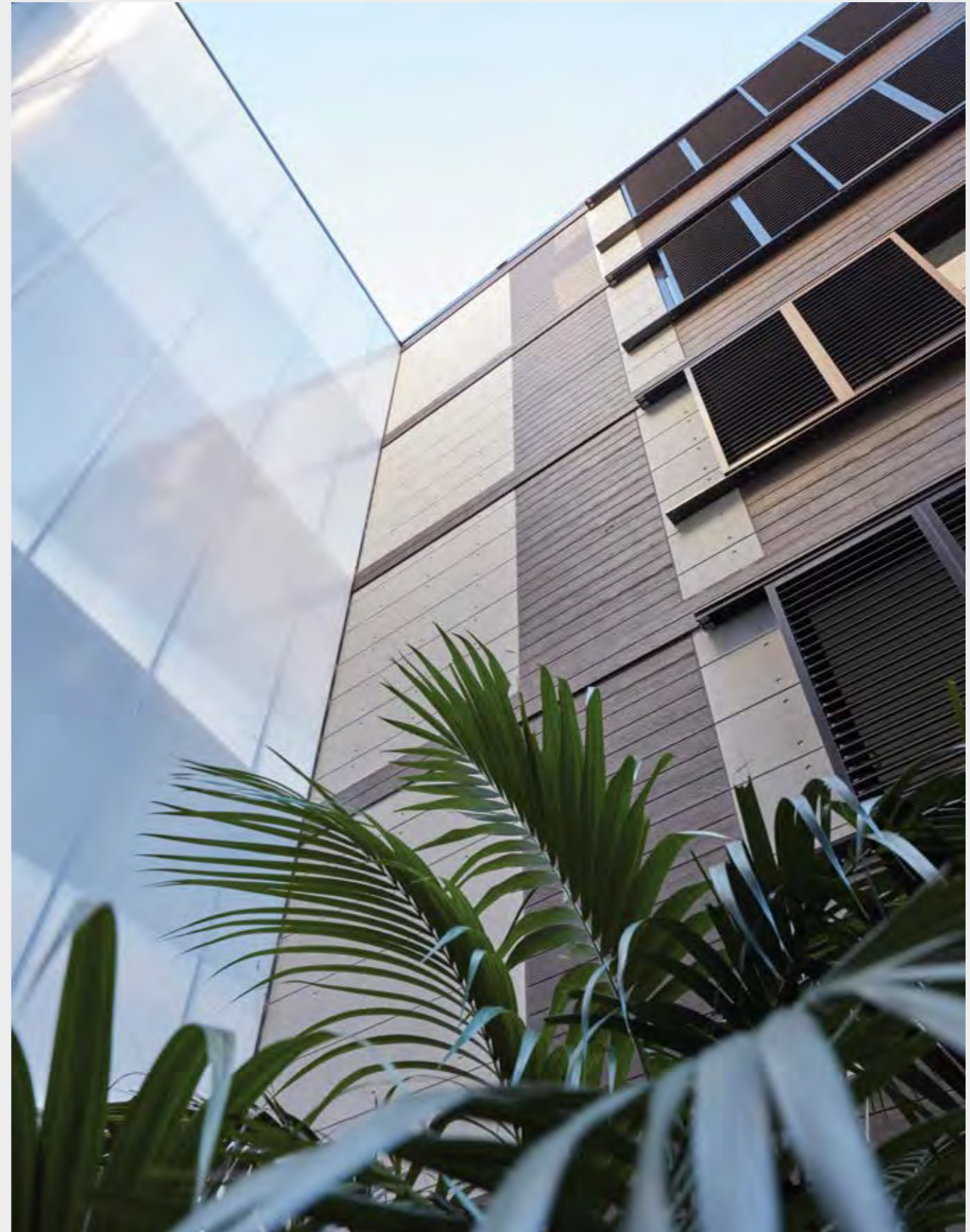


TERRITORY // WOODLANDS // SMOKED
TERRITORY // QUARRY // URBAN GREY
MOAMBA, NSW





WOODLANDS
Smoked
&
QUARRY
Urban Grey



Architect: jaa studio.

SURROUND // WHITEISH BASE
ALPHINGTON, VIC



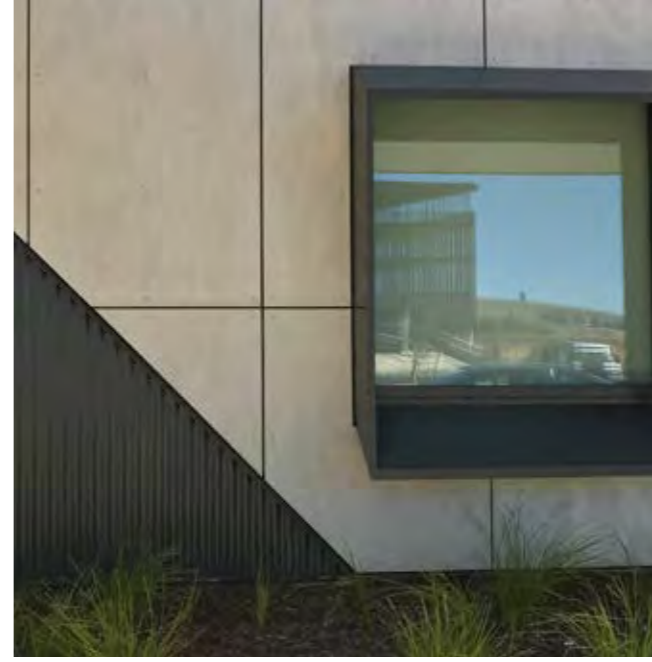


Photography: tradiemarketing.com

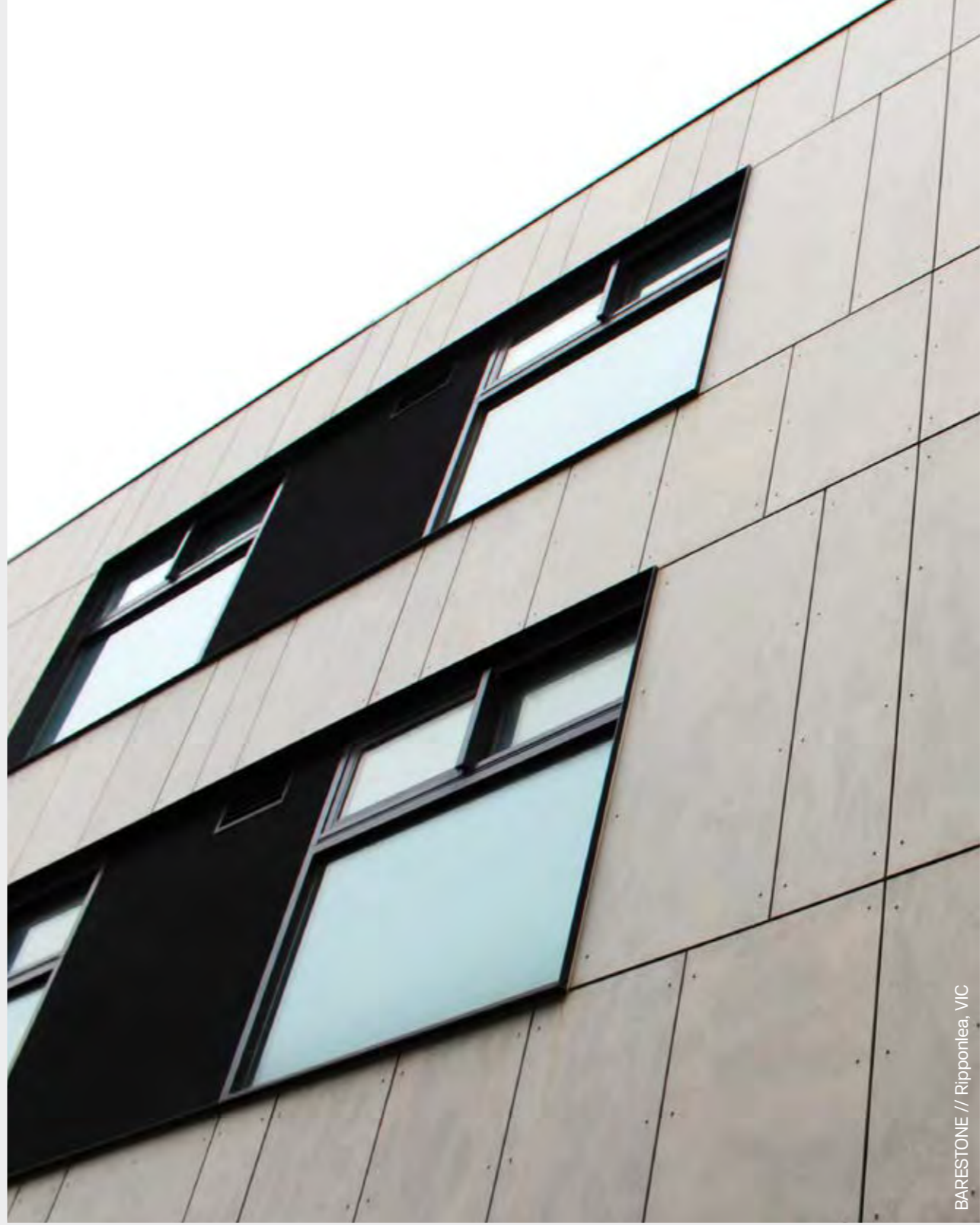


SURROUND // WHITEISH BASE

BARESTONE
BRUCE, ACT



TERRITORY // RIVERBED // SILT
PALMYRA, WA



BARESTONE // Ripponlea, VIC

BARESTONE
MOONAH, TAS





the natural beauty of
Barestone



Architect: Morrison & Breytenbach Architects.



BARESTONE
PIMPALA, SA



it's about the
Angles
BARESTONE



TERRITORY // QUARRY // CONCRETE
WELLARD, WA

managon
early learning centres





Architect: Hames Sharley.



QUARRY
concrete & timber
A great place to learn

BARESTONE
BONNY RIGG HEIGHTS, NSW





Architect: GroupN Architecture.

Better building
for future learning
BARESTONE

BARESTONE
GEORGES RIVER, NSW

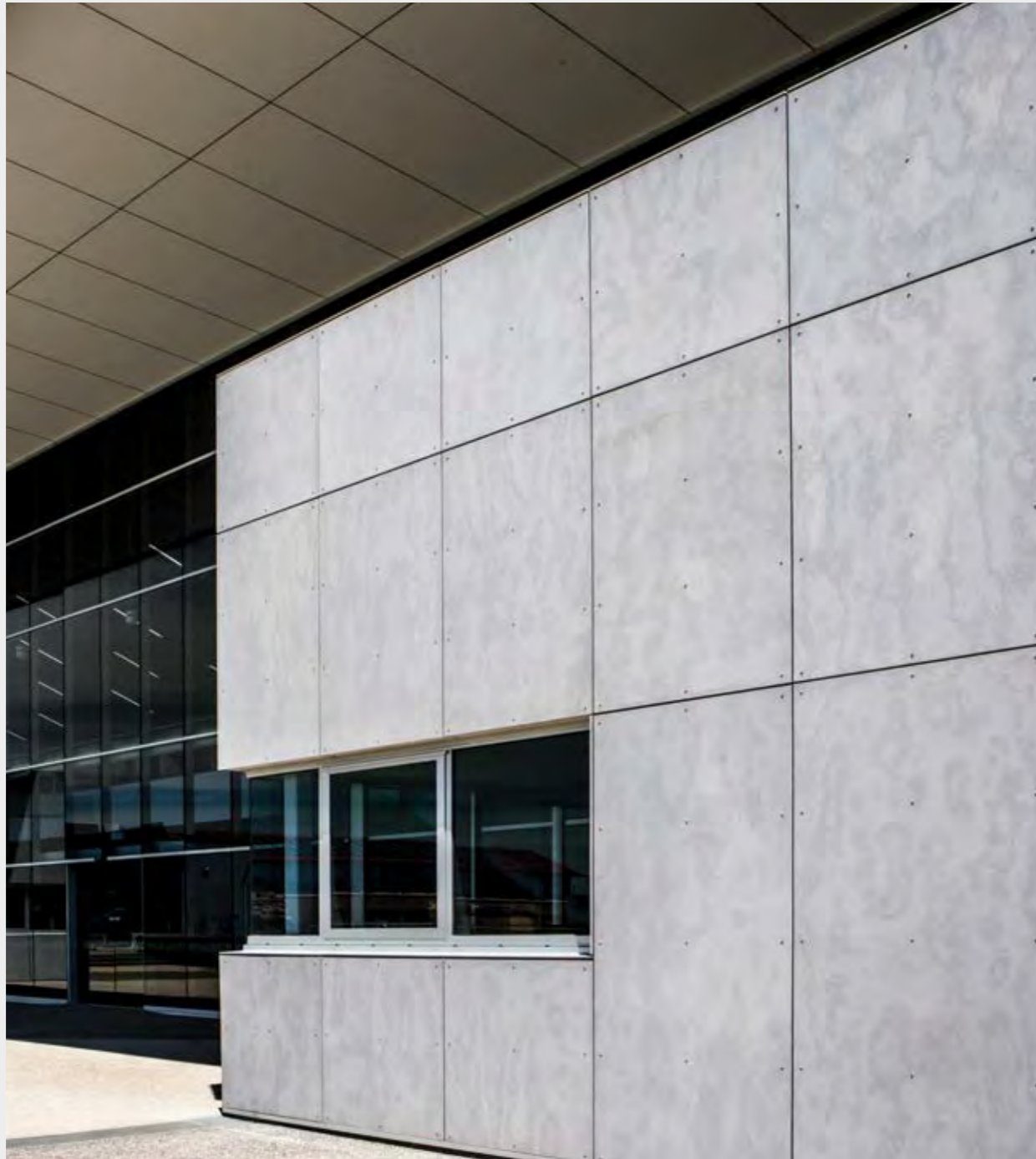




Tough enough for
school environments
BARESTONE

BARESTONE
WARRNAMBOOL, VIC

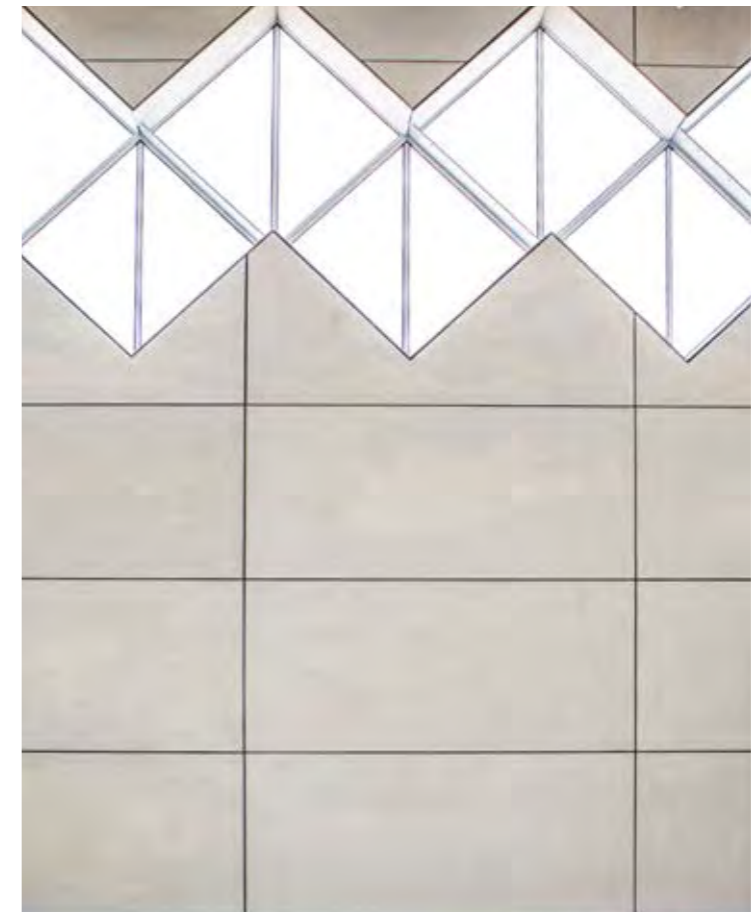


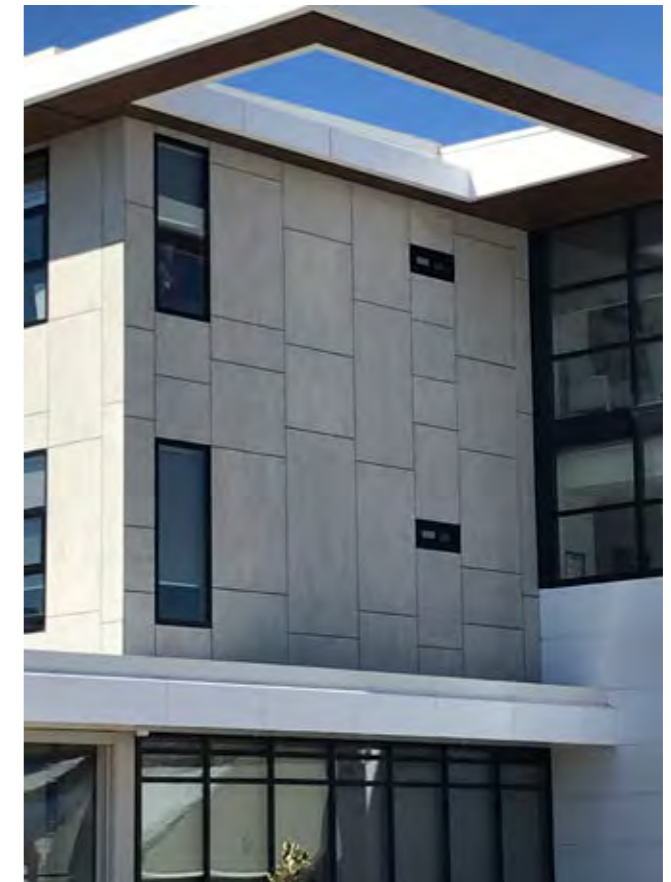


Architect: Cirillo Architects. Builder: BDH Construction.

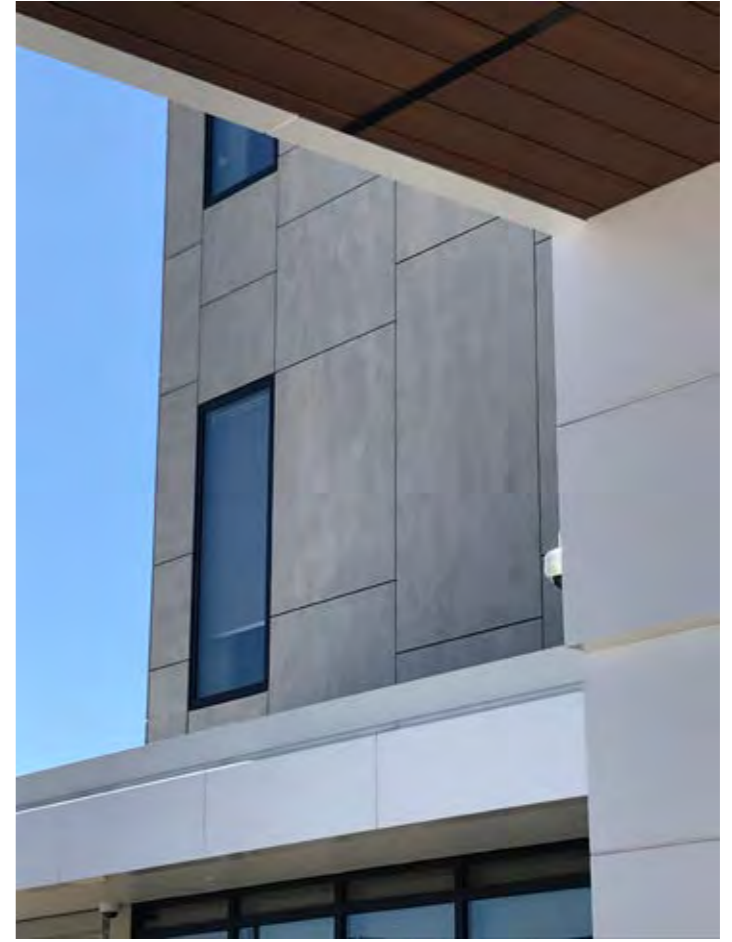
Hard wearing & durable
Barestone

Fibre cement can be cut to any shape to customise your building.





Australian made product
being used in Australian
Government buildings.



BARESTONE

BARESTONE
GOLD COAST, QLD





Functional
BARESTONE



TERRITORY // QUARRY // URBAN GREY
YARRAVILLE, VIC





QUARRY // URBAN GREY

TERRITORY // STEPPE // MONTANE
BENDIGO, VIC





Architect: Darren Casey. Photography: Jared Hartley.

dark & moody
OR
light and bright

Perfectly partnered with
CSR Himmel's Opus
ceiling tiles.

STEPPE // MONTANE

TERRITORY // QUARRY // URBAN GREY
SOUTH YARRA, VIC





Photography: tradiemarketing.com

Champagne or coffee
– you choose

QUARRY // URBAN GREY



TERRITORY // QUARRY // URBAN GREY
SYDNEY, NSW

female



QUARRY // URBAN GREY. Norwood, SA



Ideal for retail fitouts. No painting mess and quick to install. If you get tired of a look, you can update it with another finish.



QUARRY // URBAN GREY. South Yarra, VIC

TERRITORY //
QUARRY // URBAN GREY

TERRITORY // QUARRY // CONCRETE
EATON, WA



Builder: Changing Spaces – Gavin Hawke.



TERRITORY // QUARRY // URBAN GREY
CAMPSIE, NSW



Photography: Mark Supple.



TERRITORY // QUARRY // URBAN GREY
BRISBANE, QLD





Builder: Quality Innovative Constructions.

Catch up with friends **relax** with a drink
enjoy a laugh.

QUARRY // URBAN GREY



TEXTURE BASE // MOSAIC
MANJIMUP, WA





RESIDENTIAL

TERRITORY // QUARRY // CONCRETE + URBAN GREY
FINGAL, VIC





Photography: tradiemarketing.com Styling: Moniquef.



A stunning residence where good design
is evident everywhere.

QUARRY // CONCRETE + URBAN GREY

TERRITORY // QUARRY // CONCRETE + URBAN GREY
FINGAL, VIC





Photography: tradiemarketing.com Styling: Moniquef.



QUARRY // CONCRETE + URBAN GREY



BARESTONE
POTTSVILLE BEACH, NSW



Architect: Aspect Architecture. Photography: Fatfish Photography. Builder: DiNardo Building Solutions.

Beachside
beauty
BARESTONE



BARESTONE
EAGLE BAY, WA





Architect: Naked Architecture. Photographer: © Robert Frith – Acorn Photo.



Luxury **LIVING**
BARESTONE

BARESTONE
BYRON BAY, NSW





Architect: DJM Architects. Photography: Christopher Frederick Jones.



BARESTONE

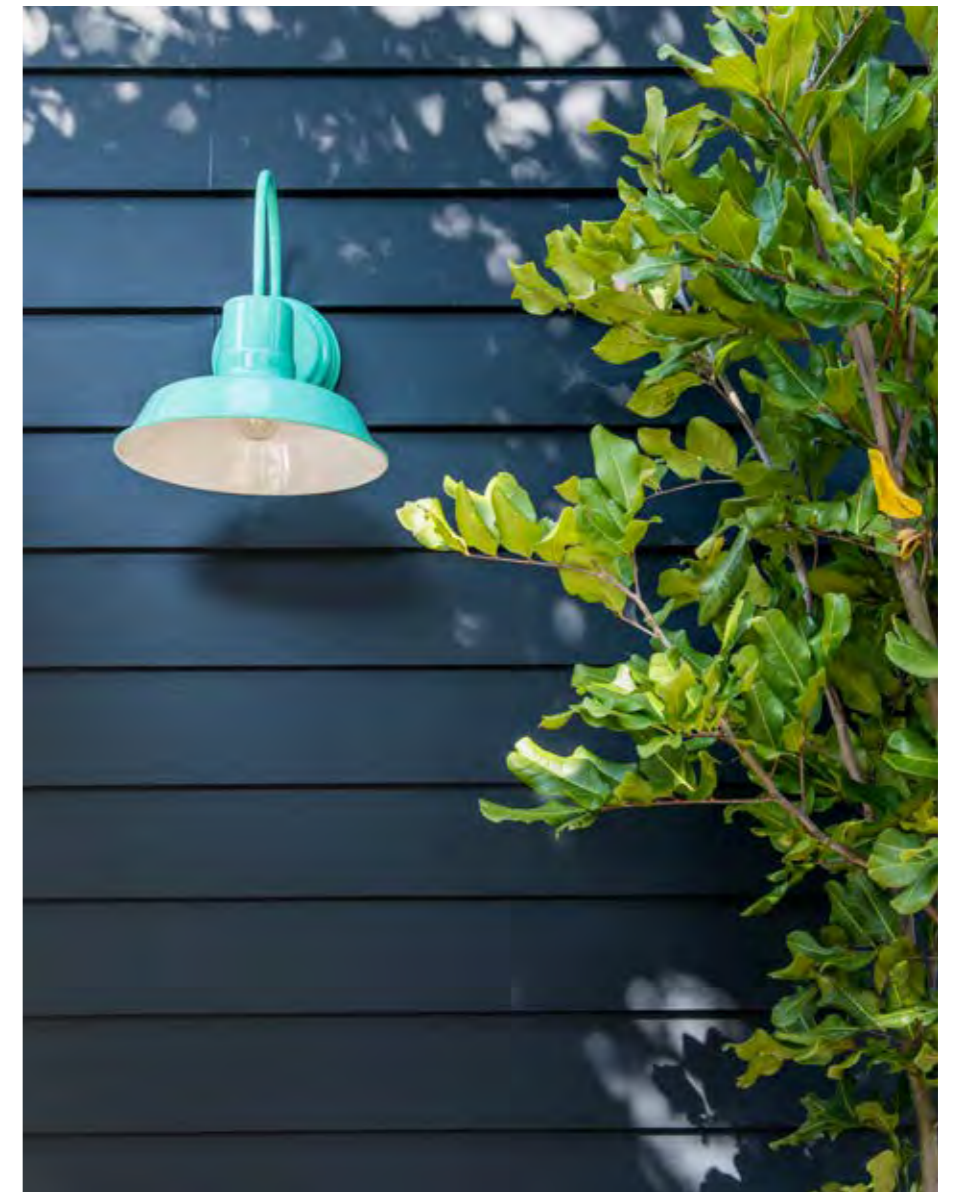
SCARBOROUGH WEATHERBOARDS
TOOWOON BAY, NSW





Casual
beachside
LIVING

SCARBOROUGH WEATHERBOARDS



TERRITORY // SAVANNA // MIST
HALLS HEAD, WA





SAVANNA Mist



BARESTONE
RAINFORST HOUSE, QLD





Architect: Dave Andren. Builder: Benchmark Building Projects.



Difficult site challenges overcome in a bushfire zone.

BARESTONE



BARESTONE
NARANDERRA, NSW





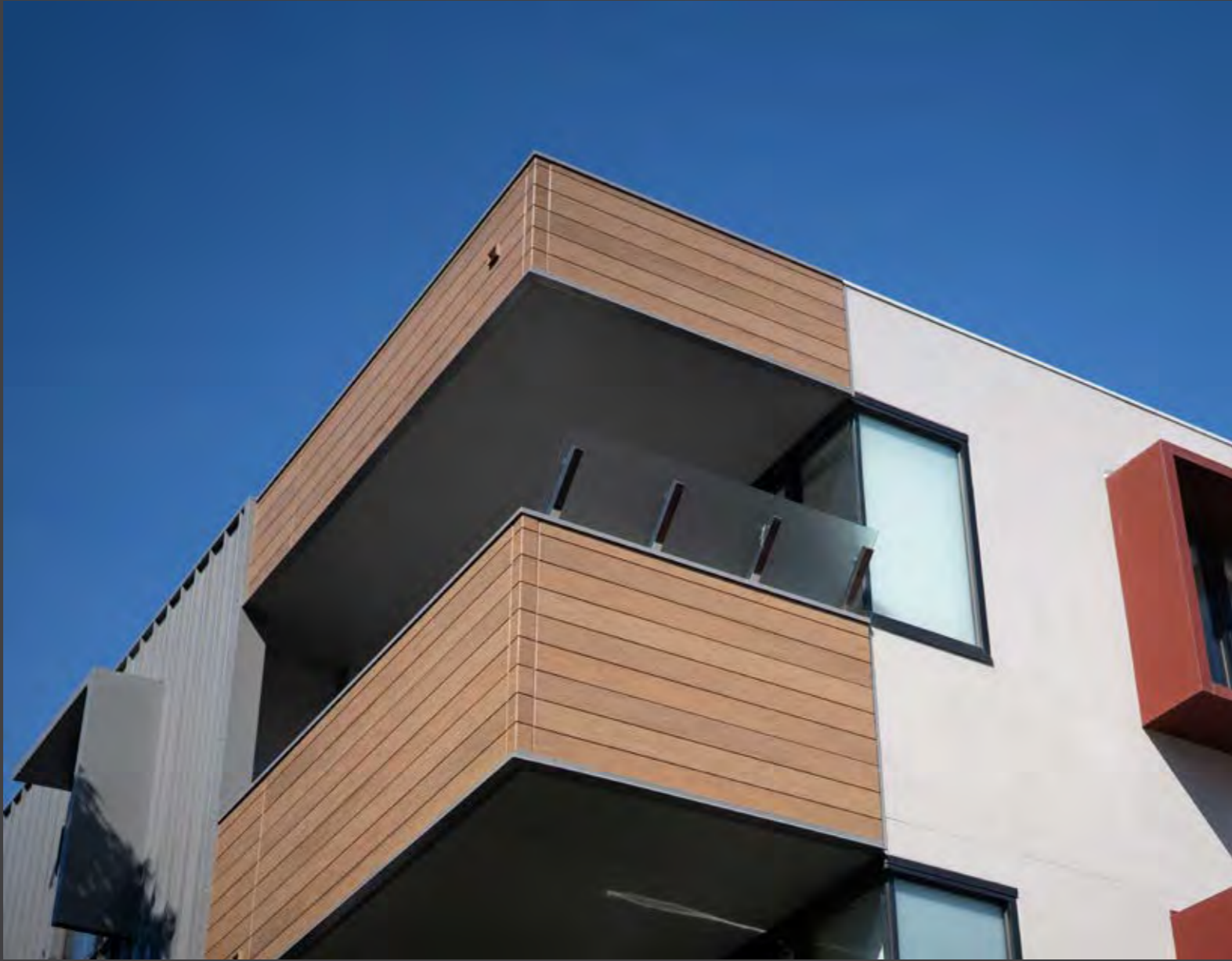
Building Design: Sewell Design.



Respecting
heritage & blending
with the natural environment
BARESTONE

TERRITORY // WOODLANDS // TEAK
RICHMOND, VIC





WOODLANDS // TEAK

TERRITORY // WOODLANDS // EBONY + LIMED + SMOKED
MORDIALLOC, VIC





Photography: tradiemarketing.com



One system with so many design options makes it great for multi-unit developments.

WOODLANDS // EBONY + LIMED + SMOKED



BARESTONE
ADELAIDE, SA



Architect: Damian Chwalisz. Builder: Robert van Gorp.

Blurring
the lines
BARESTONE



BARESTONE
ALICE SPRINGS, NT



Barestone

Emphasise what
is different about
the space.

Architect: Dunn Hillam.

BARESTONE
GISBORNE, VIC





Photography: Xtreme Visuals. Builder: VR Builders.

Good
design
matters
BARESTONE

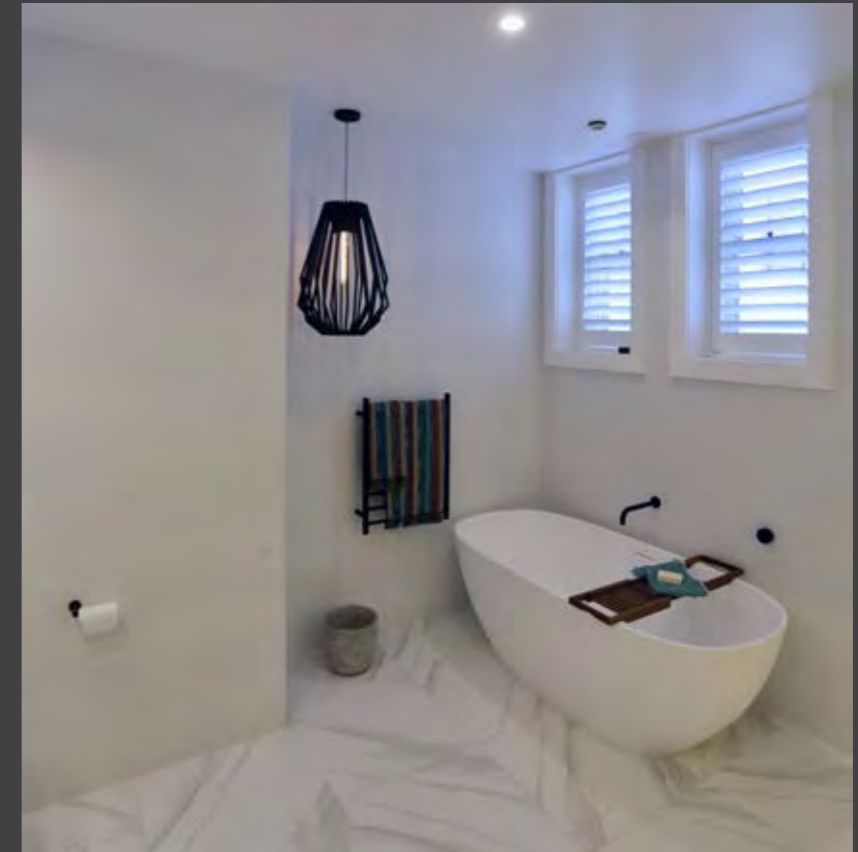


CEMINSEAL WALLBOARD
ELSTERNWICK, VIC





Architect: Julian Brenchley Architects. Photography: Peter Hyatt.



“Waterproofing is our
number one priority
in The Block”

Scott Cam – Host, The Block

CEMINSEAL WALLBOARD

A superior tile substrate.



SCARBOROUGH WEATHERBOARDS
ELSTERNWICK, VIC

PEVERELL HOUSE
Circa 1929





Architect: Julian Brenchley Architects. Photography: Peter Hyatt.

Cottage creation
MODERN STYLE
SCARBOROUGH WEATHERBOARDS



It's quick, it's accurate, it's smart. It's got that crisp architectural detail and shadow, which I like. It's a good product all round.

Julian Brenchley
Architect - The Block

SURROUND // BLACKISH BASE
ELSTERNWICK, VIC





I've been using Cemintel products for years – on The Block and in other projects – and I've always found them great to work with.

Julian Brenchley
Architect – The Block



Architect: Julian Brenchley Architects. Photography: Peter Hyatt.

THE BLOCK 2017

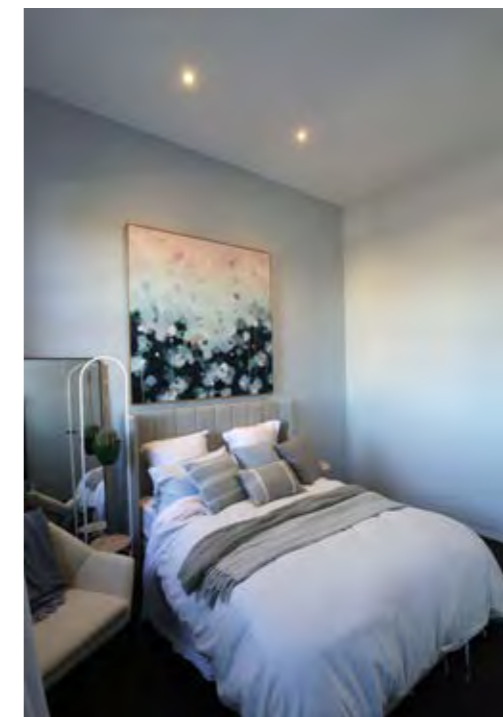
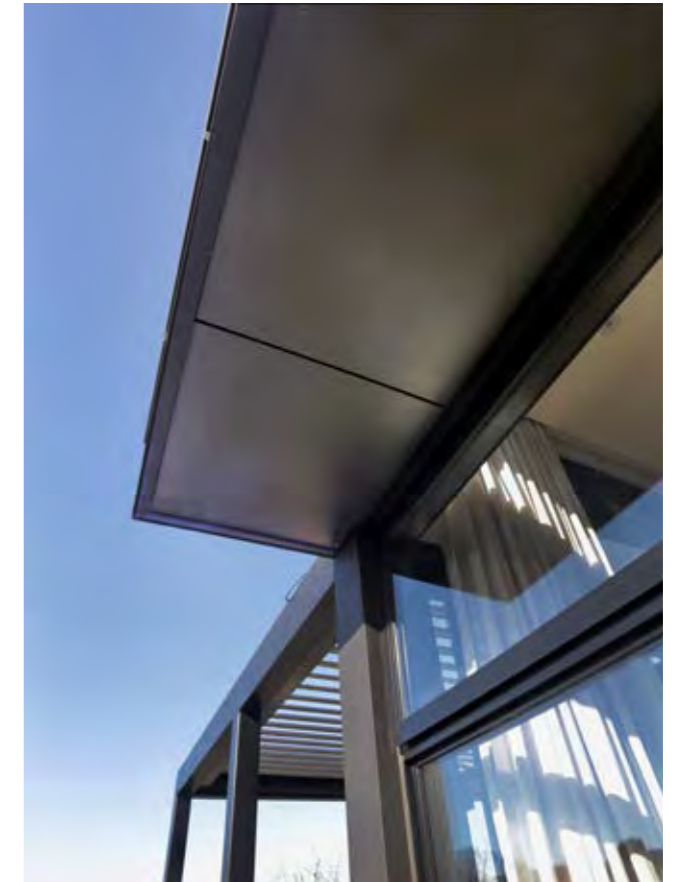


CEMINSEAL WALLBOARD
ST KILDA, VIC





Architect: Julian Brenchley Architects. Photography: Peter Hyatt.



TERRITORU // QUARRY // URBAN GREY
RED HILL, WA





Architect: Chudleigh and Davies Architects. Building Design: Eskay Design.



High end
LOW MAINTENANCE FINISH

TERRITORY // QUARRY // URBAN GREY

CONSTRUCTAFLOOR
ST KILDA, VIC





The Block **2018**

CONSTRUCTAFLOOR



Architect: Julian Brenchley Architects. Photography: Peter Hyatt.

BARESTONE
BYRON BAY, NSW



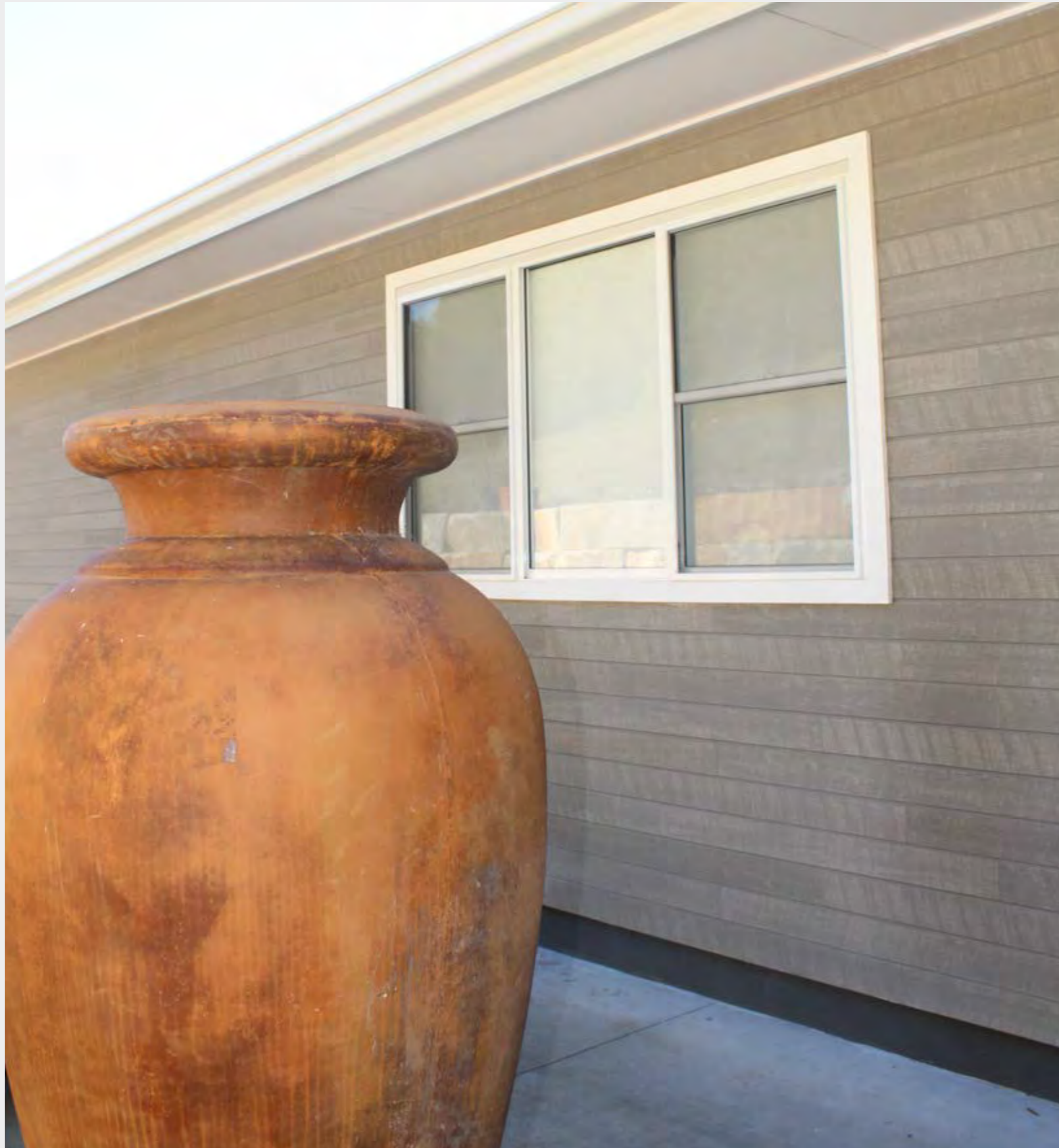


Architect: ACH. Photography: James Hung. Builder: SJ Reynolds Constructions.

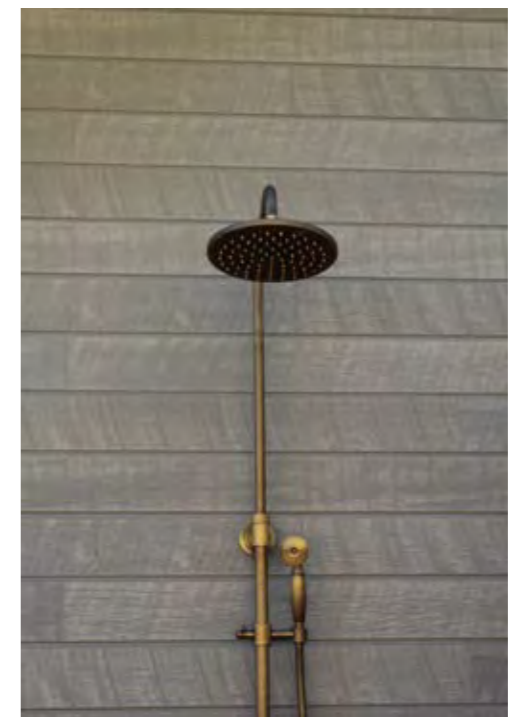
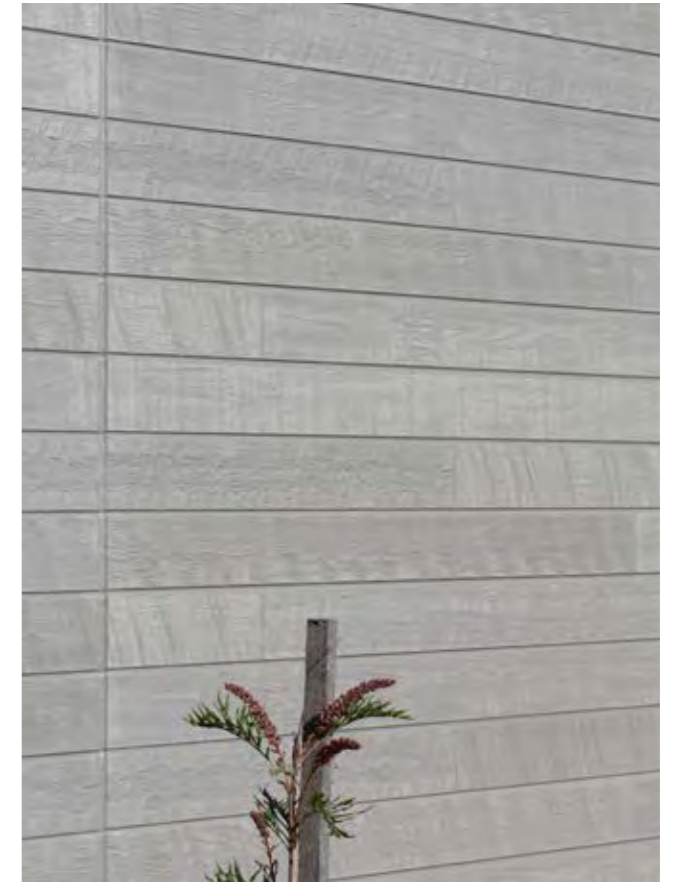
BARESTONE

TERRITORY // WOODLANDS // WHITEWASH
GLENNING VALLEY, NSW





TERRITORY // WOODLANDS // WHITEWASH



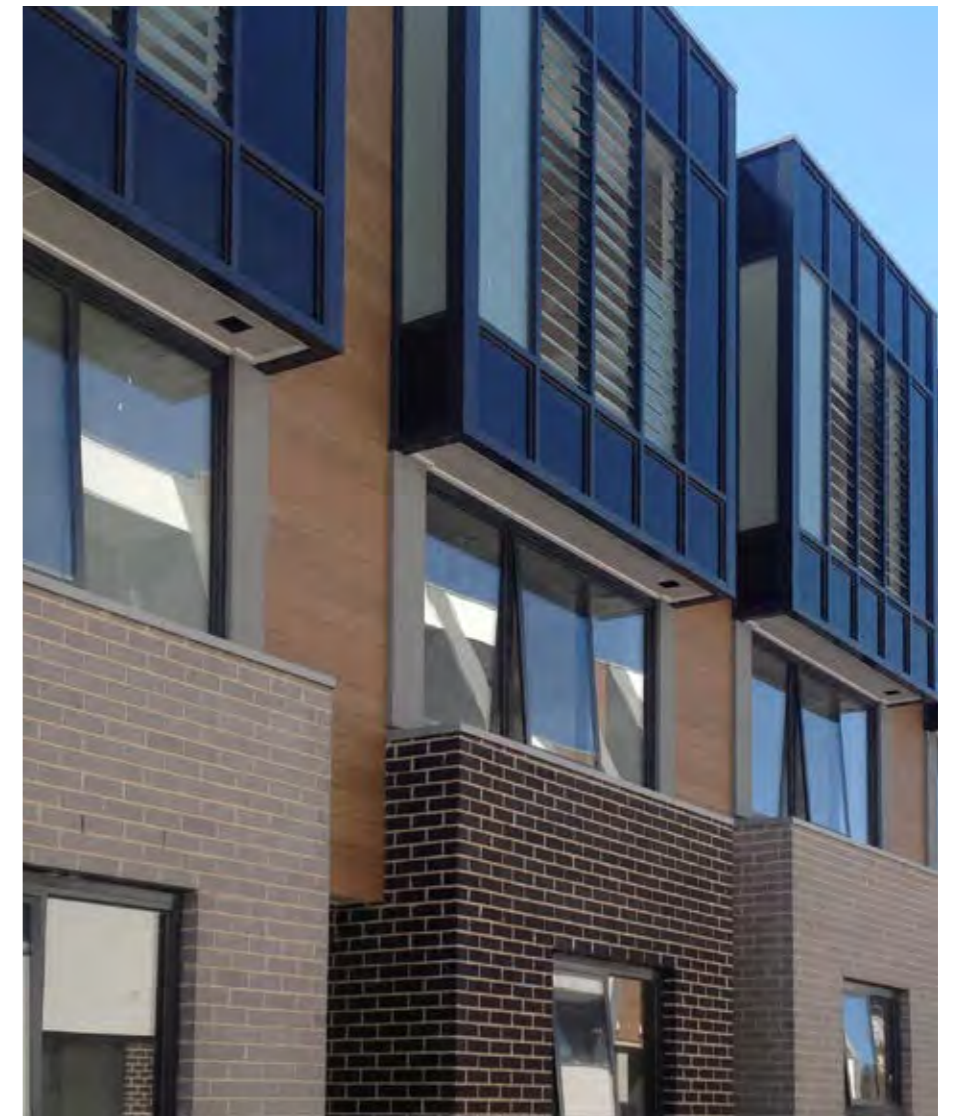
TERRITORY // WOODLANDS // TEAK
NORTH FITZROY, VIC





Composite design
...no problem

WOODLANDS // TEAK



Photography: tradiemarketing.com

BARESTONE + WOODLANDS // TEAK
ALLIGATOR CREEK, QLD





Building Design: Tempus Design Studio. Photography: Liz Andrews Photography and Design.
Builder: Executive Living Homes.

**BARESTONE
WOODLANDS // TEAK**



BARESTONE
SOUTH YARRA, VIC





Architect: Zen Architects. Photography: Derek Swalwell.



Seamless integration

BARESTONE

BARESTONE
BENDIGO, NSW





Sometimes it's all about
blending in

BARESTONE

TERRITORY // QUARRY // URBAN GREY
HAWTHORNE, QLD





Bringing the outside
inside

QUARRY // URBAN GREY

EDGE CLADDING
PERTH, WA



TERRITORY // QUARRY // CONCRETE
COTTESLOE, WA

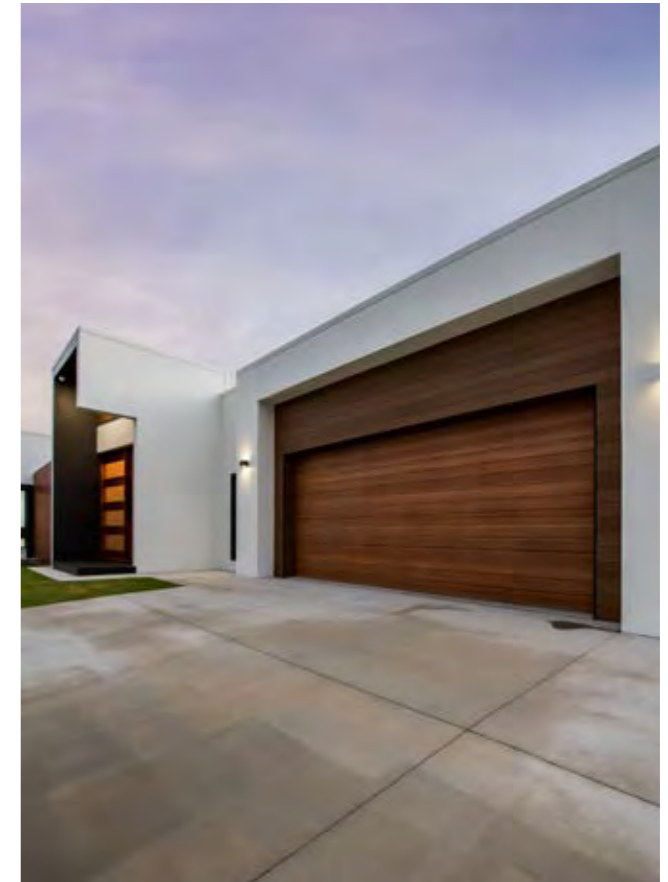


TERRITORY // WOODLANDS // TEAK
OORALEA, QLD





Building Design: Tempus Design Studio. Photography: Liz Andrews Photography and Design. Builder: Executive Living Homes.



executive
LIVING

WOODLANDS // TEAK

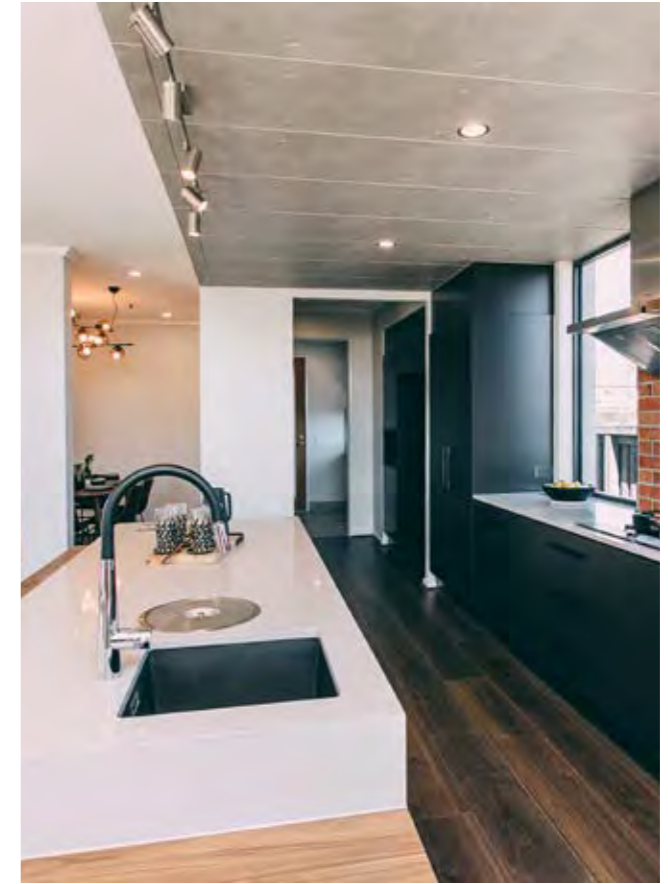


TERRITORY // QUARRY // URBAN GREY
PALLARA, QLD



Building Designer: Oracle Platinum Homes.

QUARRY // URBAN GREY



The fifth wall concept.
What you use on the wall,
you use on the ceiling.





BARESTONE
NSW



Architect: Mihaly Slocombe Architects. Photography: © Andrew Latreille.

More than a feature.
Make a bold statement
about you.

Barestone





BARESTONE
TAS



Building Design: Jennifer Binns. Photography: Dave Grove Photography. Builder: Complete Renovations and Constructions.

contemporary
rural
aesthetic
BARESTONE



TERRITORY // QUARRY // URBAN GREY
WEST LAKES, SA





Builder: Oxygen Builders.

QUARRY // URBAN GREY



TERRITORY // QUARRY // URBAN GREY
WILLIAMSTOWN, VIC





Architect: DIG Design. Photography: Peter Clarke.

QUARRY Urban Grey & timber
A natural union & timber





TERRITORY // WOODLANDS // SMOKED
GLENHUNTLY, VIC



Photography: tradiemarketing.com

WOODLANDS // SMOKED

vertical cladding
OPTION



TERRITORY // WOODLANDS // SMOKED
PROSPECT, SA





Builder: Rivergum Homes.

WOODLANDS // SMOKED



TERRITORY // WOODLANDS // SMOKED
HALLS HEAD, WA





WOODLANDS
Smoked



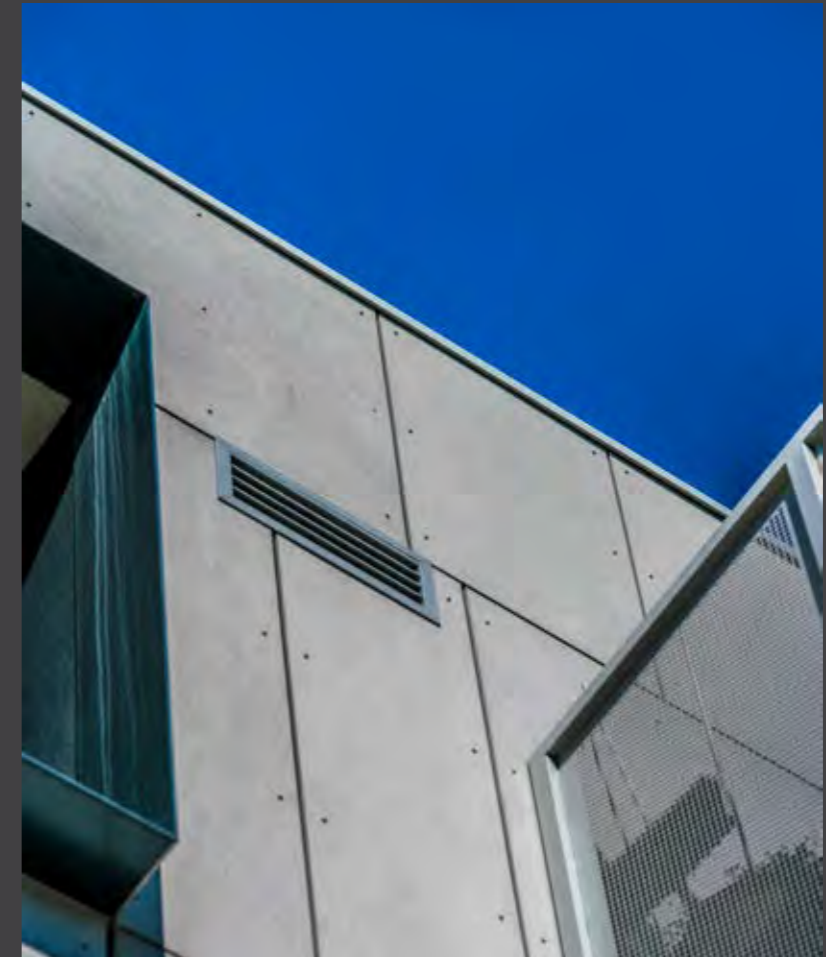
Simulate the warmth and natural look of timber, but without the maintenance.

BARESTONE
RIPPONLEA, VIC





Photography: tradiemarketing.com



weathering
GRACEFULLY

BARESTONE

EDGE CLADDING
MELVILLE, WA





Builder: Arklen.

providing a definitive Edge

SEE THE POSSIBILITIES
SOUTH BRISBANE, QLD





Cemintel

SEE THE POSSIBILITIES

This project showcases the extensive range available from Cemintel. With your creativity and our range of products, design flexibility is unlimited.

Builder: Into Building.



EDGE CLADDING, WA



HEADLAND WEATHERBOARDS, QLD



HEADLAND WEATHERBOARDS, QLD



Our Offices

Brisbane
768 Boundary Road
Coopers Plains QLD 4108

Adelaide
Lot 100 Sharp Court
Mawson Lakes SA 5095

Darwin
Cnr Stuart Highway &
Angliss Street
Berrimah NT 0828

Sydney
376 Victoria Street
Wetherill Park NSW 2164

Perth
19 Sheffield Road
Welshpool WA 6106

Melbourne
277 Whitehall Street
Yarraville VIC 3013

Hobart
11 Farley Street
Derwent Park TAS 7009

cemintel.com.au
1300 236 468

For Design and Technical Support:
DesignLink – 1800 621 117

